

## Mouse Anti-SLAMF6 Monoclonal Antibody

DMABT-H19169 Mouse(SLAMF6)

Lot. No. (See product label)

### PRODUCT INFORMATION

<b>Product Overview</b>	Mouse Anti-SLAMF6 Monoclonal Antibody
<b>Antigen Description</b>	NTBA (NK-, T-, and B-cell Antigen) is a 60 kD type I transmembrane glycoprotein. It is a member of Ig superfamily belonging to CD2/CD150 subfamily, also known as SLAMF6 (SLAM family member 6), LY108, TCOM, or SF2000. This antigen is expressed on NK cells, T cells (upregulated upon activation), and B cells. NTBA is its own ligand. The homophilic interaction of NTBA is involved in the induction of NK cytotoxicity, CD28 independent T cell costimulation, triggering Th1 cytokines production, and regulation of B cell tolerance. It may play a role in the regulation of autoimmune diseases.
<b>Target</b>	SLAMF6
<b>Immunogen</b>	Recombinant extracellular domain of NTB-A
<b>Host</b>	Mouse
<b>Isotype</b>	IgG1, kappa
<b>species</b>	Human
<b>Conjugation</b>	N/A
<b>Applications</b>	Flow Cyt,IP
<b>Preparation</b>	The LEAF (Low Endotoxin, Azide-Free) antibody was Purified by affinity chromatography.
<b>Usage recommendation</b>	Each lot of this antibody is quality control tested by immunofluorescent staining with flow cytometric analysis. For immunofluorescent staining, the suggested use of this reagent is $\leq 0.5 \mu\text{g}$ per million cells in 100 $\mu\text{l}$ volume or 100 $\mu\text{l}$ of whole blood. It is recommended that the reagent be titrated for optimal performance for each application.

### PACKAGING

<b>Concentration</b>	1.0 mg/ml
<b>Buffer</b>	Phosphate-buffered solution, pH 7.2, containing no preservative. 0.2 $\mu\text{m}$ filter sterilized. Endotoxin level is $< 0.1 \text{ EU}/\mu\text{g}$ of the protein ( $< 0.01 \text{ ng}/\mu\text{g}$ of the protein) as determined by the LAL test.
<b>Storage</b>	The antibody solution should be stored undiluted at 4 °C. This LEAF solution contains no preservative; handle under aseptic conditions.
<b>Size</b>	500 $\mu\text{g}$

### ANTIGEN GENE INFORMATION

<b>Gene Name</b>	<a href="#">SLAMF6 SLAM family member7[ Homo sapiens ]</a>
<b>Official Symbol</b>	SLAMF6
<b>Synonyms</b>	SLAMF6; SLAM family member 6; CD352; KALI; KAL1b; Ly108; NTB A; NTBA; SF2000; NTBA receptor; NK-T-B-antigen; activating NK receptor; natural killer-, T- and B-cell antigen; NTB-A; FLJ50657; MGC104953;
<b>GeneID</b>	<a href="#">114836</a>

**mRNA Refseq** [NM\\_001184714](#)

**Protein Refseq** [NP\\_001171643](#)

**MIM** [606446](#)

**UniProt ID** Q96DU3

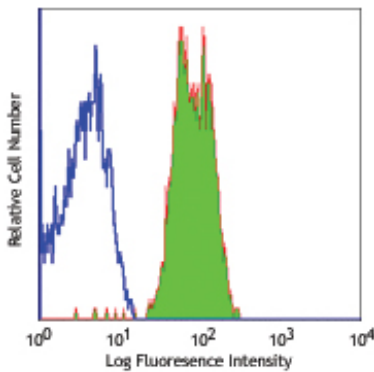
**Chromosome Location** 1q23.1

**Function** receptor activity;

## REFERENCES

1. Bottino C, et al. 2001. J. Exp. Med. 194:235
2. Valdez PA, et al. 2004. J. Bio. Chem. 279:18662
3. Flaig RM, et al. 2004. J. Immunol. 172:6524
4. Falco M, et al. 2004. Eur. J. Immunol. 34:1663
5. Kumar KR, et al. 2006. Science 312:1665.

## IMAGES



Human peripheral blood lymphocytes stained with LEAF purified NT-7, followed by anti-mouse IgG FITC